

**A Maze Zanine, Amaze Zaning, A-Mezzaning, Meza-9**  
519 West 19th Street, New York  
September 9—October 8, 2022

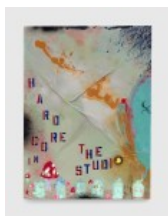
West Wall:



**Jutta Koether**  
*Manhattan Boogie #12*, 2022  
Acrylic on canvas  
Thirty-five (35) parts  
Overall dimensions variable  
Initialed, dated, and inscribed verso  
KOEJU0003



**John Sandroni**  
*The Road to Happy Destiny*, 2022  
Oil on linen  
35 x 39 inches  
88.9 x 99.1 cm  
Signed and dated verso  
SANJO0001



**Ei Arakawa**  
*Nemesis Painting*, 2022  
Oil, acrylic, plastic, hair, magnets, and thread on canvas  
75 x 55 inches  
190.5 x 139.7 cm  
ARAEI0001



**Thomas Eggerer**  
*Red Miasma*, 2014  
Acrylic and oil on linen  
51 x 44 inches  
129.5 x 111.8 cm  
Signed and dated verso  
EGGTH0002



**Nicole Eisenman**  
*Thumb Up*, 2022  
Oil on linen  
40 x 32 inches  
101.6 x 81.3 cm  
Signed, titled, and inscribed verso  
EISNI0006



**Willa Nasatir**

*Stage, 2022*

Acrylic and urethane on poly cotton

30 x 35 7/8 inches

76.2 x 91.1 cm

Signed and dated verso

NASWI0001



**Marie Karlberg**

*The Artist Is In Attendance (After Philippe Thomas),  
2020*

Archival inkjet print on canvas with gouache butt prints

36 x 48 1/8 inches

91.44 x 122.2 cm

KARMA0002



**Ser Serpas**

*Untitled, 2022*

Oil on jute canvas

44 1/4 x 62 1/2 inches

112.4 x 158.8 cm

SERSE0001



**Jonny Negrón**

*Sugar Hiccup, 2022*

Acrylic on linen

42 1/8 x 32 inches

107 x 81.3 cm

Signed, titled, and dated verso

NEGJO0001



**Stewart Uoo**

*Beulodeuwei Bugi Ugi, 2022*

Salvaged cardboard, ginkgo leaves, fiberglass, epoxy,  
acrylic, varnish, wood, aluminum hardware, and mixed  
media

48 x 40 x 1 1/4 inches

121.9 x 101.6 x 3.2 cm

Signed, titled, and dated verso

UOOST0002



**Ryan Sullivan**

*Untitled, 2022*

Cast urethane resin, fiberglass, and epoxy

54 x 46 7/8 inches

137.2 x 119.1 cm

Signed, titled, and dated verso

SULRY0002



**Josh Smith**

*Untitled, 2020*

Oil on canvas

48 1/8 x 36 1/8 inches

122.2 x 91.8 cm

Signed and dated verso

SMIJO2166



**Jeanette Mundt**

*Right But Not Accurate, 2022*

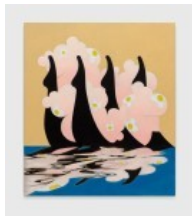
Oil and Sharpie on linen

48 1/8 x 36 1/8 inches

122.2 x 91.8 cm

Signed and dated verso

MUNJE0001



**Math Bass**

*Gemini IV, 2022*

Oil on linen

60 x 52 1/4 inches

152.4 x 132.7 cm

Signed and dated verso

BASMA0001



**Sarah Ortmeyer**

*GRANDMASTER (DIPTYCH), 2021*

Wood, binder, and pigment in two (2) parts

Overall: 7 7/8 x 17 1/8 x 1 1/4 inches

20 x 43.5 x 3.2 cm

Each: 7 7/8 x 7 7/8 x 1 1/4 inches

20 x 20 x 3.2 cm

Unique

ORTSA0001



**Keltie Ferris**

*Splice*, 2022

Oil and acrylic on canvas in artist's frame

74 7/8 x 74 7/8 x 2 3/4 inches

190.2 x 190.2 x 7 cm

Signed, dated, and inscribed verso

FERKE0003



**Katja Seib**

*hidden gem*, 2022

Acrylic and oil on canvas

86 x 66 inches

218.4 x 167.6 cm

Signed, titled, dated, and inscribed verso

SIKAT0001

North Wall:



**Ei Arakawa, Kerstin Brätsch, Nicole Eisenman, and  
Laura Owens**

*Curtain 6*, 2022

Screenprint, acrylic, and vinyl paint on linen

132 x 96 inches

335.3 x 243.8 cm

EKNAL0005



**Ambera Wellmann**

*Impossession*, 2022

Oil on linen

84 x 72 inches

213.4 x 182.9 cm

Signed and dated verso

WELAM0001



**Matt Connors**

*Batteries in French*, 2022

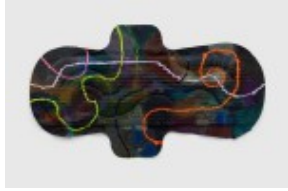
Acrylic, oil, and colored pencil on canvas

28 x 24 inches

71.1 x 61 cm

Signed, titled, dated, and inscribed verso

CONMA0008



**K8 Hardy**

*May, 2022*

Acrylic on cotton blend, stitching, and wood

72 3/4 x 127 3/4 x 2 1/2 inches

184.8 x 324.5 x 6.3 cm

HARDK0001



**Wade Guyton**

*Untitled, 2020*

Epson UltraChrome HDX inkjet on linen

36 x 27 inches

91 x 69 cm

Signed and dated verso

GUYWA0011



**Ei Arakawa, Kerstin Brätsch, Nicole Eisenman, and  
Laura Owens**

*Curtain 7, 2022*

Screenprint, acrylic, and vinyl paint on linen

132 x 96 inches

335.3 x 243.8 cm

EKNAL0006

East Wall:



**Kerstin Brätsch**

*Unstable Talismanic Rendering\_ Psychopompo (with  
gratitude to master marbler Dirk Lange), 2017*

Pigment, watercolor, ink, and solvents on paper

108 x 72 inches

274.3 x 182.9 cm

BRÄKE0001



**Theresa Chromati**

*Breath Keep -- A Pace that sighs In Between All that Is (*  
*One Woman Stretch ), 2022*

Acrylic, oil, glitter, and soft sculpture on linen

Overall: 84 x 144 3/4 x 4 1/2 inches

213.4 x 367.7 x 11.4 cm

Left: 84 x 60 1/8 x 4 1/2 inches

213.4 x 152.7 x 11.4 cm

Center: 84 x 20 1/2 inches

213.4 x 52.1 cm

Right: 84 x 60 1/8 x 4 1/4 inches

213.4 x 152.7 x 10.8 cm

Signed and dated verso

CHRTH0001



**Cecily Brown**  
*To the Groom*, 2021-2022  
Oil on linen  
41 1/8 x 67 inches  
104.5 x 170.2 cm  
Signed and dated verso  
BROCE0019



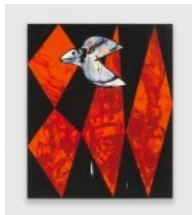
**Jill Mulleady**  
*Eye dissection*, 2022  
Oil on linen on wood panel  
13 7/8 x 15 7/8 inches  
35.2 x 40.3 cm  
Signed, dated, and inscribed verso  
MULJI0001



**Deborah Kass**  
*The Band Played On #2*, 2014  
Acrylic and tape on canvas  
60 x 72 inches  
152.4 x 182.9 cm  
Signed, titled, dated, and inscribed verso  
KASDE0002



**Katherine Bernhardt**  
*Floating*, 2022  
Acrylic and spray paint on canvas  
78 1/4 x 72 1/8 inches  
198.8 x 183.2 cm  
Signed, titled, and dated verso  
BERKA0206



**Charline von Heyl**  
*Hell Bird*, 2022  
Acrylic on linen  
60 1/8 x 50 inches  
152.7 x 127 cm  
Signed, titled, dated, and inscribed verso  
HEYCH0004



**Hadi Fallahpishah**

*Dancer in the Dark, 2022*

Chromogenic print and quilt

Quilt: 91 x 73 inches

231.1 x 185.4 cm

Framed photograph: 69 x 46 x 2 1/4 inches

175.3 x 116.8 x 5.7 cm

Unique

FALHA0001



**Leidy Churchman**

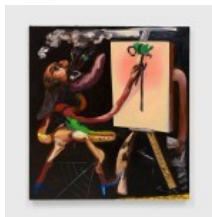
*Poof, 2022*

Oil on linen

7 1/4 x 9 1/2 inches

18.4 x 24.1 cm

CHULE0001



**Dana Schutz**

*Painting with a Gun, 2022*

Oil on canvas

78 1/4 x 72 1/8 inches

198.8 x 183.2 cm

Signed and dated verso

SCHDA0269



**Nick Mauss**

*Banderole, 2019*

Graphite and ink on paper mounted on canvas on wood panel

75 1/2 x 38 1/2 inches

191.8 x 97.8 cm

MAUNI0007



**Raphaela Simon**

*Knorpel (Cartilage), 2021*

Oil on canvas

59 1/8 x 90 5/8 inches

150.2 x 230.2 cm

Inscribed verso

SIMRA0005

Central:





**Ei Arakawa, Kerstin Brätsch, Nicole Eisenman, and Laura Owens**

*Curtain 1, 2022*

Screenprint, acrylic, and vinyl paint on linen

108 x 96 inches

274.3 x 243.8 cm

EKNAL0001



**Ei Arakawa, Kerstin Brätsch, Nicole Eisenman, and Laura Owens**

*Curtain 2, 2022*

Screenprint, acrylic, and vinyl paint on linen

108 x 96 inches

274.3 x 243.8 cm

EKNAL0002



**Ei Arakawa, Kerstin Brätsch, Nicole Eisenman, and Laura Owens**

*Curtain 3, 2022*

Screenprint, acrylic, and vinyl paint on linen

108 x 96 inches

274.3 x 243.8 cm

EKNAL0003



**Ei Arakawa, Kerstin Brätsch, Nicole Eisenman, and Laura Owens**

*Curtain 4, 2022*

Screenprint, acrylic, and vinyl paint on linen

132 x 96 inches

335.3 x 243.8 cm

EKNAL0007



**Ei Arakawa, Kerstin Brätsch, Nicole Eisenman, and Laura Owens**

*Curtain 5, 2022*

Screenprint, acrylic, and vinyl paint on linen

108 x 96 inches

274.3 x 243.8 cm

EKNAL0004



**Pope .L**

*BITTE(r), 2022*

Four hundred (400) faux lemons

Dimensions variable with installation

Edition of 3, 1 AP, EP 1

POPEL0001.1EP



North Room:



**Patricia Cronin**

*Aphrodite of Capua (Naples National Archaeological Museum)*, 2018

Polyethylene, acrylic on canvas, and dye sublimation on fabric

138 x 119 inches

350.5 x 302.3 cm

CROPA0004



**Laura Owens**

*Untitled*, 2022

Acrylic on linen

30 x 28 1/4 inches

76.2 x 71.8 cm

OWELA0033



**Judith Bernstein**

*Pink Gaslighting #4*, 2022

Acrylic on canvas

78 x 78 inches

198.1 x 198.1 cm

Signed recto

BERJU0001



**Rochelle Feinstein**

*Verbatim Hoc Moda/The Abramovic Method*, 2013-2015

Four (4) paintings, (1) archival UV print on Sintra, and fifteen (15) works on paper

Acrylic, charcoal, and polaroid on canvas; acrylic, linen, and linen thread on canvas; acrylic on canvas; oil and charcoal on canvas; archival digital print mounted on Sintra; Ink, watercolor, collage, and inkjet prints on paper

Overall dimensions variable

As installed: 58 x 212 x 1 1/2 inches

147.3 x 538.5 x 3.8 cm

Signed, titled, dated, and inscribed verso

FEIRO0002

House 1:



**Giangiacomo Rossetti**

*Untitled (Brain Dead), 2022*

Monotype on paper

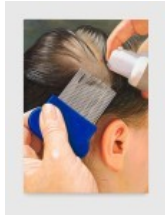
30 x 22 3/8 inches

76.2 x 56.8 cm

Framed: 33 1/8 x 25 1/2 x 1 5/8 inches

84.1 x 64.8 x 4.1 cm

ROSGI0002



**Jamian Juliano-Villani**

*Robi the Comb, 2022*

Oil and acrylic on canvas

70 x 50 inches

177.8 x 127 cm

JULJA0001



**Jonas Wood**

*CBB7, 2021*

Oil on cardboard

11 3/4 x 9 7/8 inches

29.9 x 25.1 cm

Framed: 15 1/2 x 13 3/8 x 1 3/4 inches

39.4 x 34 x 4.5 cm

Signed, titled, and dated verso

WOOJO0008



**Rirkrit Tiravanija**

*Untitled (make war against absurdity), 2022*

Stenciled paper

21 1/4 x 16 inches

54 x 40.6 cm

Framed: 23 3/8 x 18 1/8 x 1 1/2 inches

59.4 x 46 x 3.8 cm

TIRRI0020



**Giangiacomo Rossetti**

*Untitled (Saint-Lazare), 2022*

Monotype on paper

30 x 22 3/8 inches

76.2 x 56.8 cm

Framed: 33 1/8 x 25 1/2 x 1 5/8 inches

84.1 x 64.8 x 4.1 cm

ROSGI0001



**Borna Sammak**

*Don't Cough On Me*, 2022

Heat-applied graphic on canvas

24 x 20 inches

61 x 50.8 cm

Signed and dated verso

SAMBO0001



**Betty Tompkins**

*Apologia (Caravaggio #1)*, 2018

Acrylic on book page

8 1/2 x 12 inches

21.6 x 30.5 cm

Framed: 13 1/4 x 16 3/4 x 1 1/4 inches

33.7 x 42.5 x 3.2 cm

Signed, titled, and dated recto

TOMBE0001



**Sanya Kantarovsky**

*Growth IV*, 2022

Oil on canvas

16 x 11 7/8 inches

40.6 x 30.2 cm

Signed, titled, and dated verso

KANSA0001



**Mickalene Thomas**

*Jet Blue #46*, 2022

Color photograph, mixed media paper, fiberglass mesh, and rhinestones on hot press paper mounted on Dibond

49 3/4 x 36 3/4 inches

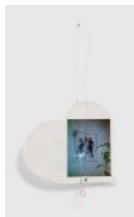
126.4 x 93.3 cm

Framed: 55 1/2 x 42 1/2 x 2 7/8 inches

141 x 108 x 7.3 cm

THOMI0002

House 2:



**Maggie Lee**

*Disco Flake Conspiracy*, 2017/2022

Cardboard, acrylic, photocopy, glitter, wire, and beads

29 1/2 x 17 3/4 x 1 1/4 inches

74.9 x 45.1 x 3.2 cm

LEEMA0005



**Will Sheldon**

*Self Portrait in the Studio, 2022*

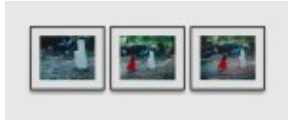
Acrylic on canvas

60 x 48 inches

152.4 x 121.9 cm

Signed, dated, and inscribed verso

SHEWI0001



**Lorraine O'Grady**

*She Descends to the Stream Where the White Stove Is Standing; The Stove Becomes More and More Red; The Woman in Red Starts Painting the Stove Her Own Color*

A selection of three (3) digital chromogenic prints from the *Rivers, First Draft* series, 1982/2015

medium

Overall: 22 1/2 x 89 1/2 x 1 5/8 inches

57.1 x 227.3 x 4.1 cm

Image, each: 15 1/8 x 19 3/8 inches

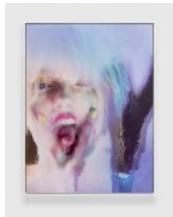
38.4 x 49.2 cm

Framed, each: 22 1/2 x 26 1/2 x 1 5/8 inches

57.1 x 67.3 x 4.1 cm

Signed, dated, and numbered verso

OGRLO0001



**Marilyn Minter**

*Canary, 2019*

Dye sublimation print

60 x 45 inches

152.4 x 114.3 cm

Framed: 61 3/4 x 46 3/4 x 2 1/4 inches

156.8 x 118.7 x 5.7 cm

Edition of 5, 2 of 2 AP

MINMA0008.2AP