

Narrative Terrain: Landscape as Storytelling

The Fabric Workshop and Museum // May 3, 2022 – October 23, 2022

Landscape has been an ever-present source of artistic inspiration for centuries. Artists often depict their surroundings not just as they are but as representations of identity, power, or markers of time. As diverse as the land itself, our histories and cultures are deeply shaped by a sense of place.

Over its 45 years, The Fabric Workshop and Museum has worked with several artists who have turned to landscape as the subject of their collaborative projects. Drawn from the museum's collection, these works employ landscape—urban and bucolic, representational and abstract—to examine its complexities, challenge our assumptions, and perhaps expand our own understanding of how we relate to the world around us.

Checklist

Hachivi Edgar Heap-of-Birds

In collaboration with The Fabric Workshop and Museum, Philadelphia

Neuf Series #36, 1992-2003

Acid dyes on silk jacquard

42 x 42 inches



Neuf Series #38, 1992-2003

Acid dyes on silk jacquard

42 x 42 inches



Abelardo Morell

In collaboration with The Fabric Workshop and Museum, Philadelphia

Camera Obscura: View of Philadelphia From Loews Hotel Room # 3013 With Upside

Down Bed, April 14, 2014

Archival pigment print

22.75 x 26.5 inches (framed)

Artist Proof 1/1



Camera Obscura: Night View of Philadelphia
From Loews Hotel Room # 3013, April 14,
2014

Archival pigment print
22.75 x 26.5 inches (framed)
Artist Proof 1/1



Laura Owens

In collaboration with The Fabric Workshop
and Museum, Philadelphia

Untitled, 2003

Hand embroidery and silkscreen print on
Tussah silk
69.5 x 50 inches
Edition 7 of 7 variants



Faith Ringgold

In collaboration with The Fabric Workshop
and Museum, Philadelphia

Tar Beach 2, 1990

Acid dyes on bleached silk dupioni with
commercially printed cotton fabrics
65 x 65 inches
Edition 5/24



Alison Rossiter

In collaboration with The Fabric Workshop
and Museum, Philadelphia

Landfall and Departure, 1997

Acid dyes on silk habotai
43 x 43 inches each
264 x 43 inches (overall)



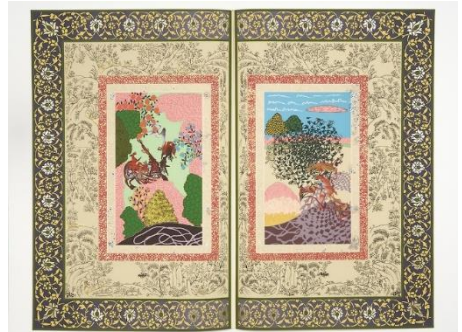
Rocks No. 1-6, 1997
Gelatin silver selenium toned photographs
15 5/8 x 15 5/8 inches each (framed)



Shahzia Sikander

In collaboration with The Fabric Workshop
and Museum, Philadelphia

The Illustrated Page Series #3, 2005-2006
Gouache hand painting, gold leaf and silk-
screened pigment on Waterford Saunders hot
press 410 gram paper
65.75 x 81.3125 x 4.0625 inches (framed)
Edition 3/3



Will Stokes, Jr.

In collaboration with The Fabric Workshop
and Museum, Philadelphia

Hidden, 1978
Pigment on cotton sateen
89 x 55.5 inches



Sarah Sze

Four Rocks, 2014
Mixed media, photographs of rocks printed
on Tyvek, polystyrene foam
Overall installed: 14 x 36 x 30 inches
Gift of the artist

