

10 February – 26 March 2022
Sadie Coles HQ, Kingly Street

REPEATER

Michele Abeles · Carl Andre · Uri Aran · Matthew Barney · Alvaro Barrington ·
Monster Chetwynd · Alex Da Corte · John Currin · Shannon Ebner ·
Urs Fischer · Jonathan Horowitz · Jim Lambie · Hilary Lloyd · Sarah Lucas ·
Jonathan Lyndon Chase · Victoria Morton · Laura Owens · Simon Periton ·
Elizabeth Peyton · Ugo Rondinone · Wilhelm Sasnal · Paloma Varga Weisz ·
TJ Wilcox · Jordan Wolfson · Andrea Zittel

T.J. Wilcox*The Jerry Hall Story*

2017

LED lightbox, duratrans print

65.5 x 217.4 x 9.5 cm / 25 ¾ x 85 ⅝ x 3 ¾ in

edition 1 of 1 + 1 a/p

HQ21-TW13767S

**T.J. Wilcox***The Little Elephant*

2017

LED lightbox, duratrans print

119 x 157 x 9.5 cm / 46 7/8 x 61 ¾ x 3 ¾ in

edition 1 of 1 + a/p

HQ21-TW13770S

**Michele Abeles***B&W #02*

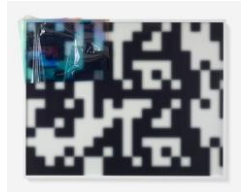
2014

lightjet print, UV solvent print

110 x 139.5 x 4.5 cm / 43 ¼ x 54 7/8 x 1 ¾ in

unique, in a series of five

HQ18-MA10913P

**Michele Abeles***B&W #06*

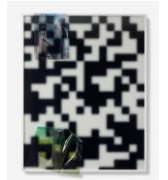
2014

lightjet print, UV solvent print

139.5 x 110 x 4.5 cm / 54 7/8 x 43 ¼ x 1 ¾ in

unique, in a series of five

HQ18-MA10915P

**Michele Abeles***B&W #04*

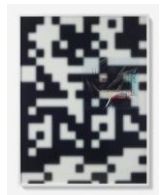
2014

lightjet print, UV solvent print

139.2 x 110 x 4.5 cm / 54 ¾ x 43 ¼ x 1 ¾ in

unique, in a series of five

HQ18-MA11005P

**Ugo Rondinone***mattituck in may*

2020

watercolour on canvas, artist's frame

6 parts

HQ23-UR16626P



www.sadiecoles.com

62 Kingly Street London W1B 5QN
1 Davies Street London W1K 3DB
8 Bury Street London SW1Y 6AB
T +44 [0] 20 7493 8611

Reg in England no 3211376
Vat no 690 6671 06

Urs Fischer*Aus dem Leben eines Taugenichts (Of the Life of a Good-for-Nothing)*

2015

cast bronze, cast brass

147 x 1451 x 23 cm / 57 ⁷/₈ x 571 ¹/₄ x 9 ¹/₈ in

edition of 2 + 1 a/p

HQ25-UF18051S

**Urs Fischer***Innocent Knowledge*

2015

23 Granny Smith apples, nylon filament

323.9 x 516.3 x 8.3 cm / 127 ¹/₂ x 203 ¹/₄ x 3 ¹/₄ in.

edition of 2 + 1 a/p

HQ25-UF18122S

**Sarah Lucas***Red Sky Cah*

2018

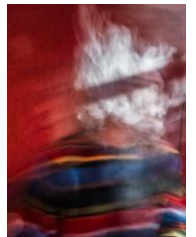
c-print

site size: 147.3 x 111.8 cm / 58 x 44 in

frame size: 152.1 x 114.4 x 6 cm / 59 ⁷/₈ x 45 ¹/₈ x 2 ³/₈ in

edition 2 of 3 plus 1 a/p

HQ21-SL13862E

**Sarah Lucas***Red Sky Gha*

2018

c-print

site size: 147.3 x 111.8 cm / 58 x 44 in

frame size: 152.1 x 114.4 x 6 cm / 59 ⁷/₈ x 45 ¹/₈ x 2 ³/₈ in

edition 3 of 3 + a/p

HQ21-SL13855E

**Sarah Lucas***Red Sky Dah*

2018

c-print

site size: 147.3 x 111.8 cm / 58 x 44 in

frame size: 152.1 x 114.4 x 6 cm / 59 ⁷/₈ x 45 ¹/₈ x 2 ³/₈ in

edition 2 of 3 plus 1 a/p

HQ21-SL13858E

**Monster Chetwynd***Bat Opera*

2019

oil on canvas paper

site size: 15.1 x 20.5 cm / 6 in x 8 ¹/₈frame size: 26.4 x 31.4 x 3.7 cm / 10 ³/₈ x 12 ³/₈ x 1 ¹/₂ in

HQ23-MC15999P

**Monster Chetwynd***Bat Opera*

2019

oil on canvas paper

site size: 15.1 x 20.5 cm / 6 in x 8 ¹/₈frame size: 26 x 31.4 x 3.7 cm / 10 ¹/₄ x 12 ³/₈ x 1 ¹/₂ in

HQ23-MC15992P

www.sadiecoles.com

62 Kingly Street London W1B 5QN

1 Davies Street London W1K 3DB

8 Bury Street London SW1Y 6AB

T +44 [0] 20 7493 8611

Reg in England no 3211376

Vat no 690 6671 06

Monster Chetwynd*Bat Opera*

2019

oil on canvas paper

site size: 15.1 x 20.5 cm / 6 in x 8 1/8

frame size: 26.4 x 32.3 x 3.7 cm / 10 3/8 x 12 3/4 x 1 1/2 in

HQ23-MC15989P

**Monster Chetwynd***Bat Opera*

2019

oil on canvas paper

site size: 15.1 x 20.5 cm / 6 in x 8 1/8

frame size: 26.4 x 32.3 x 3.7 cm / 10 3/8 x 12 3/4 x 1 1/2 in

HQ23-MC16004P

**Monster Chetwynd***Bat Opera*

2019

oil on canvas paper

site size: 15.1 x 20.5 cm / 6 in x 8 1/8

frame size: 26 x 31.4 x 3.7 cm / 10 1/4 x 12 3/8 x 1 1/2

HQ23-MC16006P

**Monster Chetwynd***Bat Opera*

2019

oil on canvas paper

site size: 15.1 x 20.5 cm / 6 in x 8 1/8

frame size: 26.4 x 31.4 x 3.7 cm / 10 3/8 x 12 3/8 x 1 1/2 in

HQ23-MC16007P

**Jonathan Horowitz***Power*

2019

digital C-print, mounted on aluminium, back mounted to Diasec

38 x 203 x 3.4 cm / 15 x 79 7/8 x 1 3/8 in

edition 1 of 10 + 2 a/p

HQ22-JH15085P

**Uri Aran***The Fastest Boy In The World, Beginning, Middle & End*

2022

gesso, oil, oil pastel, graphite and wood stain on MDO

43.2 x 37.1 x 2 cm / 17 1/8 x 14 5/8 x 3/4 in

HQ25-UA18121P

**Uri Aran***The Fastest Boy In The World, Fossil & Slide*

2022

gesso, oil, oil pastel, graphite and wood stain on MDO

37.2 x 35 x 2 cm / 14 5/8 x 13 3/4 x 3/4 in

HQ25-UA18120P



Uri Aran

The Fastest Boy In The World Choosing
2022

oil, oil pastel, graphite and wood stain on MDO
43.2 x 37.1 cm / 17 $\frac{1}{8}$ x 14 $\frac{5}{8}$ in
HQ25-UA18119P

**Uri Aran**

The Fastest Boy In The World Learning Desire
2022

oil, oil pastel, graphite and wood stain on MDO
36.5 x 29.8 x 2 cm / 14 $\frac{3}{8}$ x 11 $\frac{3}{4}$ x $\frac{3}{4}$ in
HQ25-UA18118P

**Uri Aran**

The Fastest Boy In The World Learning To Read
2022

oil, oil pastel, graphite and wood stain on MDO
43.2 x 37.1 cm / 17 x 14 $\frac{5}{8}$ in
HQ25-UA18117P

**Jim Lambie**

Sonic Reducer #34
2008

cast concrete, record spines
38 x 50 x 36 cm / 15 x 19 $\frac{5}{8}$ x 14 $\frac{1}{8}$ in
HQ12-JL6761S

**Jim Lambie**

Sonic Reducer #36
2008

cast concrete, record spines
53 x 60 x 53 cm / 20 $\frac{1}{4}$ x 23 $\frac{1}{8}$ x 20 $\frac{1}{4}$ in
HQ12-JL6775S

**Jim Lambie**

Sonic Reducer #41
2008

cast concrete, record spines
35.0 x 50.0 x 50.0 cm / 13 $\frac{1}{4}$ x 19 $\frac{1}{4}$ x 19 $\frac{1}{4}$ in
HQ12-JL6780S

**Jordan Wolfson**

Untitled
2020

inkjet print, water based enamel, adhesive media in powder coated aluminium frame
site size: 96.5 x 102 cm / 38 x 40 in
frame size: 101.8 x 106.8 x 7.8 cm / 40 $\frac{1}{8}$ x 42 $\frac{1}{8}$ x 3 $\frac{1}{8}$ in
HQ23-JW16627P



Jordan Wolfson*Untitled*

2020

inkjet print, water based enamel, adhesive media in powder coated aluminium frame

site size: 96.5 x 102 cm / 38 x 40 in

frame size: 101.8 x 106.8 x 7.8 cm / 40 1/8 x 42 1/8 x 3 1/8 in

HQ23-JW16657P

**Jordan Wolfson***Untitled*

2020

inkjet print, water based enamel, adhesive media in powder coated aluminium frame

site size: 96.5 x 102 cm / 38 x 40 in

frame size: 101.8 x 106.8 x 7.8 cm / 40 1/8 x 42 1/8 x 3 1/8 in

HQ23-JW16656P

**Spartacus Chetwynd***Nothing in No Space*

2011

bronze

30 x 70 x 30 cm / 11 3/4 x 27 1/2 x 11 3/4 in

edition 1 of 6 + 2 a/p

HQ15-SC8610S

**Spartacus Chetwynd***Nothing in No Space*

2011

bronze

38 x 67 x 27 cm / 15 x 26 3/8 x 10 5/8 in

edition 1 of 6 + 2 a/p

HQ15-SC8611S

**Spartacus Chetwynd***Nothing in No Space*

2011

bronze

30 x 60 x 27 cm / 11 3/4 x 23 5/8 x 10 5/8 in

edition 2 of 6 + 2 a/p

HQ16-SC9352S

**Spartacus Chetwynd***Nothing in No Space*

2011

bronze

37 x 67 x 27 cm / 14 5/8 x 26 3/8 x 10 5/8 in

edition 3 of 6 + 2 a/p

HQ16-SC9404S

**Carl Andre***ALTBASE 12*, Reykjavik

1996

icelandic basalt

3 x 90 x 90 cm / 1 1/8 x 35 3/8 x 35 3/8 in

HQ14-CA8066S



Carl Andre*ALTBASE 15*, Reykjavik

1996

icelandic basalt

each: 1 x 30 x 30 cm / 1 1/8 x 11 3/4 x 11 3/4 in

overall: 3 x 90 x 90 cm / 1 1/8 x 35 3/8 x 35 3/8 in

HQ14-CA8067S

**Carl Andre***ALTBASE 21*, Reykjavik

1996

icelandic basalt

each: 1 x 30 x 30 cm / 1 1/8 x 11 3/4 x 11 3/4 in

overall: 3 x 90 x 90 cm / 1 1/8 x 35 3/8 x 35 3/8 in

HQ14-CA8068S

**Carl Andre***ALTBASE 24*, Reykjavik

1996

icelandic basalt

each: 1 x 30 x 30 cm / 1 1/8 x 11 3/4 x 11 3/4 in

overall: 3 x 90 x 90 cm / 1 1/8 x 35 3/8 x 35 3/8 in

HQ14-CA8069S

**Wilhelm Sasnal***The Durutti Column 2*

2021

oil on canvas

40 x 35 x 2.5 cm / 15 3/4 x 13 3/4 x 1 in

HQ25-WS18096P

**Wilhelm Sasnal***The Durutti Column 1*

2021

oil on canvas

40 x 35 x 2.5 cm / 15 3/4 x 13 3/4 x 1 in

HQ25-WS18097P

**Wilhelm Sasnal***Ewa Demarczyk 1*

2021

oil on canvas

200 x 280 cm / 78 3/4 x 110 1/4 x 1 3/8 in

HQ25-WS18094P

**Shannon Ebner***Electric Comma Three*

2013

archival pigment print

site size: 107 x 151 cm / 42 1/8 x 59 1/2 in

frame size: 111 x 155 x 5.5 cm / 43 3/4 x 61 x 2 1/8 in

edition 1 of 5

HQ17-SE9989P



Shannon Ebner*Electric Comma Four*

2013

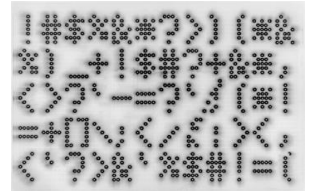
archival pigment print

site size: 107 x 151 cm / 42 1/8 x 59 1/2 in

frame size: 111 x 155 x 5.5 cm / 43 3/4 x 61 x 2 1/8 in

edition 1 of 5 + 2 a/p

HQ17-SE9990P

**Shannon Ebner***Electric Comma Five*, 2013

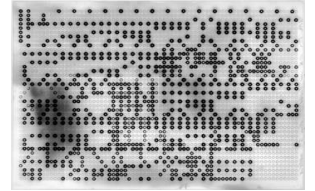
archival pigment print

site size: 107 x 151 cm / 42 1/8 x 59 1/2 in

frame size: 111 x 155 x 5.5 cm / 43 3/4 x 61 x 2 1/8 in

edition 1 of 5 + 2 a/p

HQ17-SE9991P

**Hilary Lloyd***Moon*

2011

video on USB memory stick, 2 JVC LCD 42" Monitors, Unicol Column Mount

dimensions variable

edition 1 of 3

HQ14-HL8366V

**Alvaro Barrington***Bob (could you be loved)* Jan 2022

2022

acrylic, oil, sand on burlap in wooden frame

213 x 246 x 8 cm / 83 7/8 x 96 7/8 x 3 1/8 in

HQ25-AB18109P

**Alvaro Barrington***bob get up stand up* Jan 2022

2022

acrylic, oil, sand on burlap in wooden frame

256 x 189 x 8 cm / 100 3/4 x 74 3/8 x 3 1/8 in

HQ25-AB18110P

**Laura Owens***Untitled*

2016

screen printing ink on linen

56.0 x 50.8 x 2.8 cm / 22 x 20 x 1 in

HQ20-LO12444P

**Laura Owens***Untitled*

2016

screen printing ink on linen

56.0 x 50.8 x 2.8 cm / 22 x 20 x 1 in

HQ20-LO12442P

www.sadiecoles.com

62 Kingly Street London W1B 5QN
 1 Davies Street London W1K 3DB
 8 Bury Street London SW1Y 6AB
 T +44 [0] 20 7493 8611

Reg in England no 3211376
 Vat no 690 6671 06

Laura Owens*Untitled*

2016

screen printing ink on linen

56.0 x 50.8 x 2.8 cm / 22 x 20 x 1 in

HQ20-LO12443P

**Elizabeth Peyton***George 2*

2021

signed, titled and dated on verso

monotype in oil on handmade paper

site size: 29.2 x 24 cm / 11 ½ x 9 ½ in

frame size: 34.6 x 29.2 x 4.2 cm / 13 ⅝ x 11 ½ x 1 ⅝ in

HQ25-EP18103D

**Elizabeth Peyton***George 1*

2021

signed, titled and dated on verso

monotype in oil on handmade paper

site size: 29.2 x 24 cm / 11 ½ x 9 ½ in

frame size: 34.6 x 29.2 x 4.2 cm / 13 ⅝ x 11 ½ x 1 ⅝ in

HQ25-EP18104D

**Victoria Morton***Untitled*

2010

signed and dated on verso

oil on canvas

115 x 147.8 x 2.5 cm / 45 ¼ x 58 ¼ x 1 in

HQ25-VM17983P

**Victoria Morton***Untitled*

2010

signed and dated on verso

oil on canvas

115 x 148.5 x 2.5 cm / 45 ¼ x 58 ½ x 1 in

HQ25-VM17984P

**Victoria Morton***Untitled*

2010

signed and dated on verso

oil on canvas

113.8 x 147 x 2.5 cm / 44 ¾ x 57 ⅞ x 1 in

HQ25-VM17982P

**Matthew Barney***In vain produced, all rays return, Evil will bless, and ice will burn*

2015

four Woodburytypes on copper mounting with electroformed copper, nickel and 24 karat gold, in red oak frame

frame size, each: 29.6 x 39.9 x 5 cm / 11 ⅝ x 15 ¾ x 2 in

edition 6 of 12 + 3 a/p, 2PP, 1 BAT

HQ21-MB14069E

www.sadiecoles.com

62 Kingly Street London W1B 5QN
 1 Davies Street London W1K 3DB
 8 Bury Street London SW1Y 6AB
 T +44 [0] 20 7493 8611

Reg in England no 3211376
 Vat no 690 6671 06

Alex Da Corte*Le Coup au Coeur*

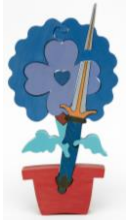
2022

basswood, poplar, poplar dyed veneer, Baltic birch ply, water based stain

48.5 x 24.8 x 4.7 cm / 19 1/8 x 9 3/4 x 1 7/8 in

1 of 8 unique versions + 2 a/p

HQ25-AD18054S

**Alex Da Corte***Le Coup au Coeur*

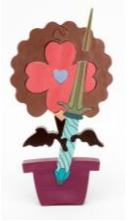
2022

basswood, poplar, poplar dyed veneer, Baltic birch ply, water based stain

48.5 x 24.8 x 4.7 cm / 19 1/8 x 9 3/4 x 1 7/8 in

1 of 8 unique versions + 2 a/p

HQ25-AD18055S

**Alex Da Corte***Le Coup au Coeur*

2022

basswood, poplar, poplar dyed veneer, Baltic birch ply, water based stain

48.5 x 24.8 x 4.7 cm / 19 1/8 x 9 3/4 x 1 7/8 in

1 of 8 unique versions + 2 a/p

HQ25-AD18056S

**Paloma Varga Weisz***Bye Bye Stubai*

2002

signed, titled and dated on verso

pencil and aquarelle on paper

site size: 61.0 x 45.8 cm / 24 x 18 in

frame size: 92.3 x 78.1 x 2.2 cm / 36 3/8 x 30 3/4 x 7/8 in

HQ8-PV4526D

**Paloma Varga Weisz***Stubai Face I*

2002

signed, titled and dated on verso

pencil and aquarelle on paper

site size: 61.0 x 45.8 cm / 24 x 18 in

frame size: 92.3 x 78.1 x 2.2 cm / 36 3/8 x 30 3/4 x 7/8 in

HQ8-PV4524D

**Paloma Varga Weisz***Stubai Face III*

2002

signed, titled and dated on verso

pencil and aquarelle on paper

site size: 61.0 x 45.8 cm / 24 x 18 in

frame size: 92.3 x 78.1 x 2.2 cm / 36 3/8 x 30 3/4 x 7/8 in

HQ8-PV4527D



Paloma Varga Weisz

Stubai Face II

2002

signed, titled and dated on verso

pencil and aquarelle on paper

site size: 61.0 x 45.8 cm / 24 x 18 in

frame size: 92.3 x 78.1 x 2.2 cm / 36 ³/₈ x 30 ³/₄ x ⁷/₈ in

HQ8-PV4525D



Paloma Varga Weisz

Stubai Face Tripled

2002

signed, titled and dated on verso

pencil and aquarelle on paper

site size: 61.0 x 45.8 cm / 24 x 18 in

frame size: 92.3 x 78.1 x 2.2 cm / 36 ³/₈ x 30 ³/₄ x ⁷/₈ in

HQ8-PV4531D



Simon Periton

Cracked Actor

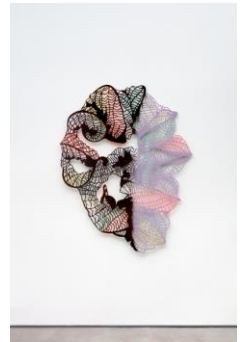
2022

mild steel, zinc sprayed, colour paint and satin lacquer finish

167 x 129 x 4.5 cm / 64 ³/₄ x 50 ³/₄ x 1 ³/₄ in

edition 1 of 3 + 1 a/p

HQ25-SP18059S



Simon Periton

Sucker Punch

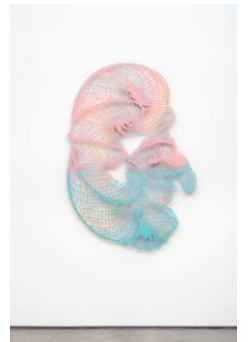
2022

mild steel, zinc sprayed, colour paint and satin lacquer finish

164 x 114 x 4.5 cm / 64 ⁵/₈ x 44 ⁷/₈ x 1 ³/₄ in

edition 1 of 3 + 1 a/p

HQ25-SP18060S



Regent Street**Jonathan Lyndon Chase***days come and go*, 2022

acrylic paint, marker, spray paint, plastic rhinestone, plastic mirror, glass mirror, collage, wood, toilet seat and oil pastel on canvas

152.4 x 182.9 cm / 60 x 72 in

HQ25-JL18176P

**Jonathan Lyndon Chase***2 lovers talking in shower*, 2022

acrylic paint, marker, spray paint, plastic rhinestone, on canvas toilet seat

182.9 x 152.4 cm / 72 x 60 in

toilet seat dims: 27.9 x 29.2 x 7.6 cm / 11 x 11 1/2 x 3 in

HQ25-JL18177P

**Jonathan Lyndon Chase***Hot and Cold passages*, 2022

acrylic paint, marker, spray paint, plastic rhinestone on canvas, toilet seat

182.9 x 152.4 cm / 72 x 60 in

toilet seat dims: 27.9 x 29.2 x 7.6 cm / 11 x 11 1/2 x 3 in

HQ25-JL18178P

**Jonathan Lyndon Chase***Warm Watery Middle Soothing Piss Drain*, 2022

acrylic paint, marker, spray paint, plastic rhinestone on canvas, toilet seat

182.9 x 152.4 cm / 72 x 60 in

toilet seat dims: 27.9 x 29.2 x 7.6 cm / 11 x 11 1/2 x 3 in

HQ25-JL18179P

**John Currin***Milestones*

2006

portfolio of seven etchings with aquatint and dry-point

Paper Size: 45.7 x 36.5 cm / 18 x 14 5/8 in

edition 32 of 45

HQ9-JC5261E

**Andrea Zittel***Court #4*

2014

gouache on paper

site size: 34 x 55.5 cm / 13 3/8 x 21 7/8 in

frame size: 39.9 x 63 x 3.4 cm / 15 3/4 x 24 3/4 x 1 1/8 in

HQ17-AZ10433D

**Andrea Zittel***Court #3*

2014

gouache on paper

site size: 34 x 55.5 cm / 13 3/8 x 21 7/8 in

frame size: 39.9 x 63 x 3.4 cm / 15 3/4 x 24 3/4 x 1 1/8 in

HQ17-AZ10434D

www.sadiecoles.com

62 Kingly Street London W1B 5QN

1 Davies Street London W1K 3DB

8 Bury Street London SW1Y 6AB

T +44 [0] 20 7493 8611

Reg in England no 3211376

Vat no 690 6671 06

Andrea Zittel

Court #2

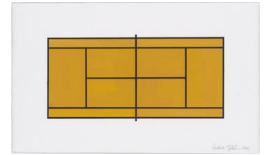
2014

gouache on paper

site size: 34 x 55.5 cm / 13 ³/₈ x 21 ⁷/₈ in

frame size: 39.9 x 63 x 3.4 cm / 15 ³/₄ x 24 ³/₄ x 1 1 ¹/₈ in

HQ17-AZ10435D



Andrea Zittel

Court #1

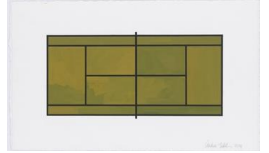
2014

gouache on paper

site size: 34 x 55.5 cm / 13 ³/₈ x 21 ⁷/₈ in

frame size: 39.9 x 63 x 3.4 cm / 15 ³/₄ x 24 ³/₄ x 1 1 ¹/₈ in

HQ17-AZ10436D



Wilhelm Sasnal

Ewa Demarczyk 2

2021

oil on canvas

120 x 160 cm / 47 ¹/₄ x 63 in

HQ25-WS18095P

