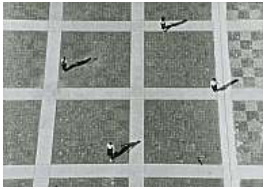


Less Is a Bore: Maximalist Art & Design

Room 1



Babette Mangolte and Lucinda Childs

Calico Mingling

1973

16mm film transferred to video (black-and-white, sound; 10:00 minutes)

Courtesy the artists



Nathalie Du Pasquier

Untitled

circa 1984/2019

Site-specific wallpaper

Courtesy the artist



Valerie Jaudon

Pantherburn

1979

Metallic powder and oil on canvas

96 x 72 inches (243.8 x 182.9 cm)

Courtesy the artist and DC Moore Gallery, New York



Sol LeWitt

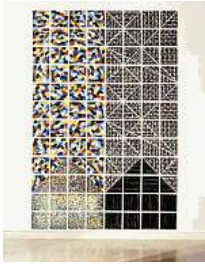
Wall Drawing 280

1976

Graphite, crayon, and yellow acrylic paint on wall

Dimensions variable

Private collection, San Francisco



Jennifer Bartlett
27 Howard Street; Day and Night
1977
Baked enamel and silkscreen, enamel on steel plates
Ninety-six parts, 155 x 103 inches (393.7 x 261.6 cm) (overall)
Private collection; Courtesy Locks Gallery, Philadelphia



Nathalie Du Pasquier
Royal
1983
Wood, fabric, and plastic laminate, with cushion and armrest fabric by George J. Sowden
86 5/8 x 29 1/2 x 37 3/8 inches (220 x 75 x 95 cm)
Fabricated by Urban Architecture, New York



Jasper Johns
Scent
1976
Lithograph, linocut, and woodcut from four aluminum plates, four linoleum blocks, and four woodblocks on Twinrocker paper
33 1/2 x 48 1/8 inches (85 x 122 cm)
Harvard Art Museums/Fogg Museum, Special Purchase Fund



Joyce Kozloff
Tile Wainscot
1979-81
Hand-painted and glazed ceramic tiles grouted on plywood
Twenty parts, 48 x 256 inches (121.9 x 650.2 cm) (overall)
Courtesy the artist and DC Moore Gallery, New York



Robert Kushner
Cincinnati C
1978
Acrylic on cotton with Lurex and nylon appliqué
Three parts, 108 x 240 inches (274.3 x 609.6 cm) overall
Courtesy the artist and DC Moore Gallery, New York



Howardena Pindell
Autobiography: Artemis
1986
Mixed media on canvas
82 x 93 inches (208.3 x 236.2 cm)
Courtesy the artist and Garth Greenan Gallery, New York



Lucas Samaras
Chair Transformation Number 12
1969-70
Painted plywood
41 7/8 x 36 x 12 7/8 inches (106.4 x 91.4 x 32.7 cm)
Whitney Museum of American Art, New York; Purchase, with funds from the Howard and Jean Lipman Foundation, Inc.



Lucas Samaras
Chair Transformation Number 9
1969-70
Acrylic on wood
40 x 25 x 25 inches (101.6 x 63.5 x 63.5 cm)
Courtesy the artist and Pace Gallery, New York



Miriam Schapiro
Mexican Memory
1981
Acrylic, glitter, and fabric on canvas
48 x 96 inches (121.9 x 243.8 cm)
Collection of Kathleen and Douglas Landy, New York



Ettore Sottsass
Casablanca Sideboard
1981
Wood and plastic laminate
90 1/2 x 59 x 15 3/4 inches (229.9 x 149.9 x 40 cm)
Collection of Keith Johnson and Celia Morrissette, Urban Architecture, New York



Venturi, Scott Brown & Associates

Grandmother

1983

Pigment on cotton sateen

56 inches (142.2 cm) wide

Produced in collaboration with The Fabric Workshop and Museum, Philadelphia



Franklin Williams

Yellow Apron

1970

Acrylic, fabric, yarn, and nails on canvas

40 x 48 inches (101.6 x 121.9 cm)

Courtesy the artist and Parker Gallery, Los Angeles



Franklin Williams

Sixteen Sweet Moments

1972

Acrylic, crochet thread, and fabric on canvas

40 x 48 inches (101.6 x 121.9 cm)

Courtesy the artist and Parker Gallery, Los Angeles



Betty Woodman

Window

1980

Pigment, thread, Velcro on cotton, canvas, sateen, and earthenware

62 x 75 inches (157.5 x 190.5 cm)

Produced in collaboration with The Fabric Workshop and Museum, Philadelphia

Courtesy The Fabric Workshop and Museum, Philadelphia



Robert Zakanitch

Big Bungalow Suite III

1991-92

Acrylic on canvas

132 x 384 inches (335.3 x 975.4 cm)

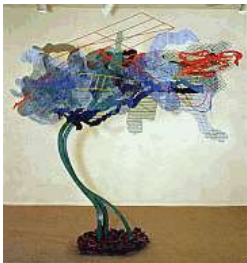
Courtesy the artist



Polly Apfelbaum
Small Townsville
2001
Synthetic velvet and dye
120 x 120 inches (304.8 x 304.8 cm)
Miller Meigs Collection, Portland, OR



Roger Brown
Celebration of the Uncultivated—A Garden of the Wild
1980
Oil on canvas
60 x 120 1/4 inches (152.4 x 305.4 cm)
Montgomery Museum of Fine Arts, Alabama, Association Purchase



Nancy Graves
Trace
1979-80
Bronze, steel with polychromed patina, and paint
107 x 115 x 59 inches (271.8 x 292.1 x 149.9 cm)
Gift of Ann and Graham Gund



Joyce Kozloff
If I Were an Astronomer: Boston
2015
Mixed media on canvas
37 x 55 inches (94 x 139.7 cm)
Courtesy the artist and DC Moore Gallery, New York



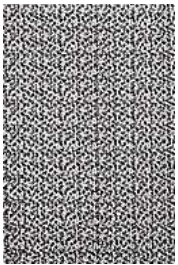
Laura Owens
Untitled
2015
Oil, Flashe, and screen printing ink on linen
18 x 137 1/2 inches (45.7 x 349.3 cm)
Purchased through the generosity of the Acquisitions Circle



Frank Stella
Brazilian Merganser, 5.5X
1980
Mixed media on aluminum
120 x 96 x 19 inches (304.8 x 243.8 x 48.3 cm)
Collection of Martin Z. Margulies, Miami



Philip Taaffe
Observatory
2011
Mixed media on linen
80 x 110 inches (203.2 x 279.4 cm)
Courtesy the artist and Lühring Augustine, New York



Christopher Wool
Untitled
1987
Enamel and latex on aluminum and steel
72 x 48 inches (182.9 x 121.9 cm)
Collection of Bridgitt and Bruce Evans, Boston

Room 4



Tord Boontje
Shadowy
2009
Polyethylene, steel, and paint
Two chairs, each 63 x 41 x 35 inches (160 x 104.1 x 88.9 cm) (overall)
Seat: 12 inches (30.5 cm)
Courtesy Moroso, Italy



Jeffrey Gibson
DON'T MAKE ME OVER
2018
Canvas, nylon thread, brass grommets, brass bells, and tulle
53 x 75 x 20 inches (134.6 x 190.5 x 50.8 cm)
Courtesy the artist



Jeffrey Gibson
DON'T MAKE ME OVER
2018
Organza and cotton thread
120 x 240 x 120 inches (304.8 x 609.6 x 304.8 cm)
Courtesy the artist



Robert Kushner
Wedding Dress
1976
Acrylic on cotton, nylon hats, silk tassels, and Japanese silk
118 x 117 inches (299.7 x 297.2 cm)
Courtesy the artist and DC Moore Gallery, New York



Leigh Bowery and Fergus Greer
Looks
1988-94
Photographs exhibited as a digital image sequence

Courtesy the artists



Ellen Lesperance
Wounded Amazon (Pulse)
2016
Gouache and graphite on toned cyanotype
41 1/4 x 29 1/2 inches (104.8 x 74.9 cm)
Private collection, New York



Ellen Lesperance
Wounded Amazon (for Sandra Bland II)
2017
Gouache and graphite on toned cyanotype
41 x 29 1/2 inches (104.1 x 74.9 cm)
Courtesy the artist and Adams and Ollman, Portland, OR



Miriam Schapiro
Vestiture: Paris Series #2
1979
Acrylic and fabric on canvas
60 x 50 1/4 inches (152.4 x 127.6 cm)
Joslyn Art Museum, Omaha, NE. Gift of Barbara Gladstone



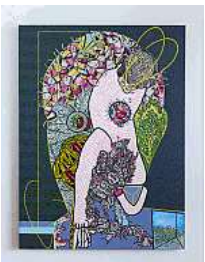
Stephanie Syjuco
Applicant Photos (Migrants)
2013–17
Pigmented inkjet prints
Three works, each 3 5/8 x 4 3/16 inches (9.1 x 10.7 cm)
Courtesy the artist and Catharine Clark Gallery, San Francisco



Stephanie Syjuco
Cargo Cults: Cover-Up
2013–16
Pigmented inkjet print
20 x 16 inches (50.8 x 40.6 cm)
Collection of Catharine Clark, San Francisco



Kehinde Wiley
The Sisters Zénaïde and Charlotte Bonaparte
2014
Oil on linen
84 x 63 inches (213.4 x 160 cm)
Collection of Nathan and Glenn Serphos, New York; Courtesy the artist and Roberts Projects, Los Angeles



Franklin Williams
Little Porcelain Boy
2018
Acrylic, collage, and crochet thread on canvas
40 x 30 inches (101.6 x 76.2 cm)
Courtesy the artist and Parker Gallery, Los Angeles



Ray Yoshida
Phil and Flo
1971
Acrylic on canvas
40 x 31 1/2 inches (101.6 x 80 cm)
Private collection, New York

Room 5



Ron Amstutz
Re:enact (Remix)
2009-14/2019
Two-channel video (color, sound; 11:00 minutes)

Courtesy the artist

Room 6



Virgil Marti
Large Chandelier (Hybrid)
2007
Polyurethane resin, electrical wiring, light bulbs, cable, and macramé cord
45 x 64 x 64 inches (114.3 x 162.6 x 162.6 cm)
Courtesy the artist



Virgil Marti
Austrian Swag
2009
Seven color screenprint on Tyvek
Site-specific wallpaper
Courtesy the artist; Produced in collaboration with The Fabric Workshop and Museum, Philadelphia



Virgil Marti
Hippie Piss
2014
Urethane, MDF, and silver plating
72 x 36 x 4 inches (182.9 x 91.4 x 10.2 cm)
Courtesy the artist and Locks Gallery, Philadelphia



Virgil Marti
Starman
2014
Urethane, MDF, and silver plating
72 x 36 x 4 inches (182.9 x 91.4 x 10.2 cm)
Courtesy the artist



Virgil Marti
Straight Rainbow
2014
Urethane, MDF, and silver plating
72 x 36 x 4 inches (182.9 x 91.4 x 10.2 cm)
Courtesy the artist and Locks Gallery, Philadelphia



Virgil Marti
Doppelgänger
2017
Fabric (faux rabbit fur, vinyl, velvet, brocade velvet, bullion fringe), foam, and plywood
27 x 96 x 96 inches (68.8 x 243.8 x 243.8 cm)
Courtesy the artist

Room 7



Sanford Biggers
DAGU
2016
Fabric, spray paint, and acrylic on antique quilts
49 x 103 x 5 inches (124.5 x 261.6 x 12.7 cm)
Museum of Arts and Design, New York; Purchase with funds provided by the Collections Committee, 2018



Taylor Davis
REDGREENBLACKWHITES
2015-ongoing
Oil on canvas with hand-built poplar stretchers
Three diptychs, each pair 66 x 56 inches (167.6 x 142.2 cm)
Courtesy the artist



Liza Lou
Offensive/Defensive
2008
Glass beads on aluminum panel
72 x 36 inches (182.9 x 91.4 cm)
Collection of Diana Yanovick Dornquast, New York



Dianna Molzan
Untitled
2019
Oil on canvas with poplar
80 x 38 1/2 x 1 1/2 inches (203.2 x 97.8 x 3.8 cm)
Courtesy the artist, kaufmann repetto, Milan and New York, and Kristina Kite Gallery, Los Angeles



Joel Otterson
Voluptuous Desire
2018
Cast iron, brass, and 24-karat gold
73 x 43 x 36 inches (185.4 x 109.2 x 91.4 cm)
Courtesy the artist and Royale Projects, Los Angeles



Zoe Pettijohn Schade
Crowd of Crowds: Obedience Scale
2018
Gouache on paper
46 1/2 x 35 1/2 inches (118.1 x 90.2 cm)
Courtesy the artist and Kai Matsumiya Gallery, New York



Lari Pittman
Portrait of a Human (Pathos, Ethos, Logos, Kairos #10)
2018
Cel vinyl and spray paint over linen mounted on wood panel
28 5/8 x 24 1/2 x 1 3/4 inches (72.7 x 62.2 x 4.4 cm)
Private collection, San Francisco



Lari Pittman
Portrait of a Textile (Glazed Chintz)
2018
Cel-vinyl and spray enamel on canvas over wood panel
81 x 70 x 2 inches (205.7 x 177.8 x 5.1 cm)
Courtesy the artist and Regen Projects, Los Angeles



Ruth Root
Untitled
2016
Plexiglas, fabric, enamel, and spray paint
94 3/4 x 48 inches (240.7 x 121.9 cm)
Gift of the American Academy of Arts and Letters, New York; Hassam, Speicher, Betts and Symons Funds, 2018



Monir Shahroudy Farmanfarmaian
Muqarnas One
2012
Mirror, reverse painted glass, and plaster on wood
32 x 45 x 31 1/2 inches (81.3 x 114.3 x 80 cm)
Courtesy the artist and Haines Gallery, San Francisco



Marcel Wanders
Bon Bon Chair
2010
Fiber, resin, and metal
20 7/8 x 41 3/8 x 41 3/8 inches (53 x 104.9 x 104.9 cm)
Courtesy the artist and Friedman Benda, New York



Pae White
Drone-Dome D
2016
Cotton, polyester, Lurex, and cashmere
114 x 114 inches (290 x 290 cm)
Courtesy the artist and neugerriemschneider, Berlin



Pae White
Bugz + Drugs, Command-D
2017
Cotton, polyester, and Lurex
98 1/2 x 98 1/2 inches (250 x 250 cm)
Courtesy the artist and neugerriemschneider, Berlin



Pae White
Bugz + Drugs, Command-K
2019
Cotton, polyester, and Lurex
98 1/2 x 98 1/2 (250 x 250 cm)
Courtesy the artist



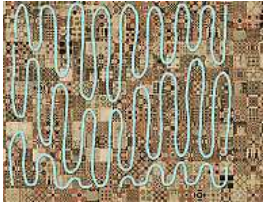
Pae White
Bugz + Drugs, Command-L
2019
Cotton, polyester, and Lurex
114 x 114 inches (290 x 290 cm)
Courtesy the artist



Betty Woodman
Of Botticelli
2013
Glazed earthenware, epoxy resin, lacquer, and acrylic paint
126 x 384 x 3/4 inches (320 x 975.4 x 1.9 cm) overall
Courtesy Charles Woodman / Estate of Betty Woodman, David Kordansky Gallery, Los Angeles,
and Salon 94, New York



Haegue Yang
The Intermediate – Inceptive Sphere
2016
Artificial straw, steel stand, powder coating, artificial plants, artificial fruits, plastic twine, Indian
bells, and casters
53 1/8 x 45 1/4 x 45 1/4 inches (134.9 x 114.9 x 114.9 cm)
General Acquisition Fund



Polly Apfelbaum
Pattern and Apparition
2015
Site-specific wallpaper

Courtesy the artist