

## Park View

836 South Park View Street #8  
Los Angeles, California USA 90057  
www.parkviewparkview.com

### "A Spaghetti Dress for World Peace", Sept. 2 – Oct. 21, 2017



**Tom of Finland**

*Untitled (Preparatory Drawing)*, c. 1986  
Graphite on paper  
11.68 x 8 1/4 inches (29.67 x 20.96 cm)  
Framed: 14.19 x 10.68 inches (36.04 x 27.13 cm)



**Paul Heyer**

*Blue Apples*, 2017  
Oil and acrylic on polyester  
2 parts, each: 67 x 48 inches (170.18 x 121.92 cm)  
Overall: 67 x 96 inches (170.18 x 243.84 cm)



**Timothée Calame**

*Untitled (1)*, 2016  
Earth globe, washing line, wood, mirror  
Dimensions variable



**Timothée Calame**

*Untitled (2)*, 2016  
Earth globe, washing line, wood, mirror  
Dimensions variable

## Park View

836 South Park View Street #8  
Los Angeles, California USA 90057  
www.parkviewparkview.com



**Dena Yago**  
*REGRESSERGNI*, 2017  
Vinyl  
Dimensions variable



**Catharine Czudej**  
*Trap piece*, 2017  
Fishing wire, fishing reel, coffee can, wood, steel, fiberglass  
38 1/4 x 43 1/2 x 29 1/2 inches (97.16 x 110.49 x 74.93 cm)



**David Muenzer**  
*untitled*, 2017  
Pastel on paper  
10.88 x 14.88 inches (27.64 x 37.80 cm)  
Frame: 13 1/4 x 17 1/4 inches (33.66 x 43.82 cm)



**David Muenzer**  
*untitled*, 2017  
Pastel on paper  
14.88 x 10.88 inches (37.80 x 27.64 cm)  
Frame: 17 1/4 x 13 1/4 inches (43.82 x 33.66 cm)



**David Muenzer**  
*untitled*, 2017  
Pastel on paper  
10.88 x 14.88 inches (27.64 x 37.80 cm)  
Frame: 13 1/4 x 17 1/4 inches (33.66 x 43.82 cm)



**Oto Gillen**  
*WTC 2*, 2011  
Silver gelatin print in artist frame  
28.63 x 34 1/2 x 2 inches (72.72 x 87.63 x 5.08 cm)

## Park View

836 South Park View Street #8  
Los Angeles, California USA 90057  
www.parkviewparkview.com



### Dardan Zhegrova

*Your enthusiasm to tell a story (Pink)*, 2017

Mixed media and sound

Approximately: 78.74 x 39.37 inches (200.00 x 100.00 cm)

Dimensions variable



### Heji Shin

*#lonelygirl2*, 2015

C-print

42 1/2 x 32.13 inches (107.95 x 81.61 cm)



### Dena Yago

*INGRESSERGE*, 2017

Vinyl

Dimensions variable



### Victoria Colmegna

*#229. Super Senior Series: Schiller Schuller in Floral Selfhood Valley*, 2015; *#62: Who's Who?: Will the real Jessica please stand up?*, 1990; *#35. Out of Control: Will Aaron Dallas destroy Elizabeth's and Jeffrey's happiness?*, 1987; *#66. Who's to Blame?: Elizabeth is running away!*, 1990; *#41. Outcast: Will anyone speak to Molly Hecht again?*, 1987; *#17. Boys against Girls: Elizabeth and Jessica team up to fight there worse enemy, Boys!*, 1988, 2016

Pastel, graphite, and pen on velvet and paper (commissioned portrait and original sketches by Jimmy Mathewuse, illustrator of the "Sweet Valley High book" series book covers); glass, steel, and PVC vitrine with lock-and-key

26.38 x 35 3/4 x 3 3/4 inches (67.01 x 90.81 x 9.53 cm)



### Sam Grossinger

*Friend Who I Trust ("Rich and Famous Magazine Presents Fine Arts Community Event," Peter Friel)*, 2017

Artist publication in frame

11 x 8 1/2 inches (27.94 x 21.59 cm)

Frame: 14.18 x 11.69 x 1 inches (36.02 x 29.69 x 2.54 cm)

## Park View

836 South Park View Street #8  
Los Angeles, California USA 90057  
www.parkviewparkview.com



**Mark McKnight**  
*Nike (Variation 2)*, 2017  
Archival pigment print  
24 x 30 inches (60.96 x 76.20 cm)



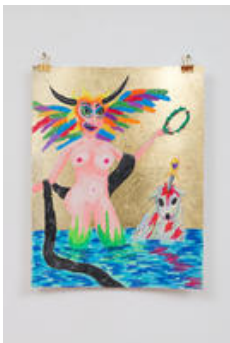
**Dena Yago**  
*EGRESSERGER*, 2017  
Vinyl  
Dimensions variable



**Megan Marrin**  
*Svetlana (black)*, 2016  
Oil on canvas  
48 x 36 x 1 1/2 inches (121.92 x 91.44 x 3.81 cm)



**Gypsy Sport**  
*untitled (from Fall 2017 collection)*  
mixed media



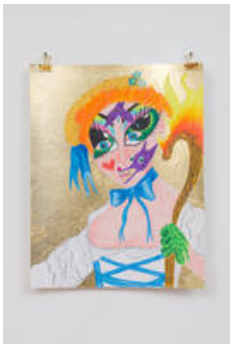
**Bailey Scieszka**  
*The Sheep was Awarded Laurels in the Lake*, 2017  
Colored pencil and gold leaf on paper  
14 x 11 inches (35.56 x 27.94 cm)

## Park View

836 South Park View Street #8  
Los Angeles, California USA 90057  
www.parkviewparkview.com



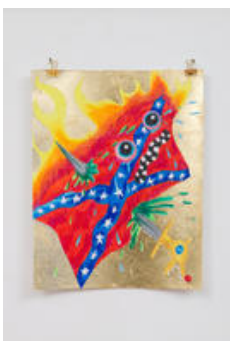
**Bailey Scieszka**  
*Confederate Baby and Her Rebel Doll, 2017*  
Colored pencil and gold leaf on paper  
8 x 6 inches (20.32 x 15.24 cm)



**Bailey Scieszka**  
*The Alien Bratz Shepherdess' Crook Is On Fire, 2017*  
Colored pencil and gold leaf on paper  
14 x 11 inches (35.56 x 27.94 cm)



**Bailey Scieszka**  
*The Monster Wore Stabbed Dolphin Face Paint, 2017*  
Colored pencil and gold leaf on paper  
14 x 11 inches (35.56 x 27.94 cm)



**Bailey Scieszka**  
*Stabbed, Crying, and on Fire Rebel Flag, 2017*  
Colored pencil and gold leaf on paper  
14 x 11 inches (35.56 x 27.94 cm)

## Park View

836 South Park View Street #8

Los Angeles, California USA 90057

[www.parkviewparkview.com](http://www.parkviewparkview.com)



### **Bailey Scieszka**

*Old Put Theme Duvet*, 2017

Fabric paint, fabric dye, and acrylic on IKEA duvet cover  
86 x 86 inches (218.44 x 218.44 cm)



### **Laura Owens**

*untitled*, 2017

video

59m36s