

# Natural History checklist 7.2.12

## Mel Bochner

American, b. 1940

*Measurement: Plant (Palm)*, 1969

live plant and tape on wall

H: 120 in. x W: 48 in. (304.80 x 121.92 cm)

Carnegie Mellon Art Gallery Fund, 1997.37

Offices - CMA Curatorial file



1003309

## Vija Celmins

American, b. 1938

*Ocean Surface 2000*, 2000

wood engraving

H: 8 1/4 in. x W: 10 1/4 in. (20.95 x 26.04 cm) image size

H: 20 3/4 in. x W: 17 1/4 in. (52.71 x 43.82 cm) sheet size

Carol R. Brown Acquisition Fund, 2000.24.1

Print Room - Bin 30A



1004015

## Vija Celmins

American, b. 1938

*Untitled (Web 4)*, 2002

one-color photogravure with burnishing and drypoint on Hahnemühle

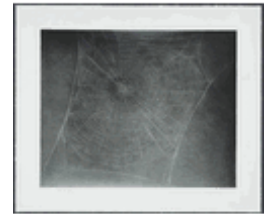
Copperplate paper

H: 20 1/2 in. x W: 24 1/2 in. (52.07 x 62.23 cm) sheet size

H: 15 1/2 in. x W: 19 1/4 in. (39.37 x 48.90 cm) Plate size

The Henry L. Hillman Fund, 2003.10.1

Workshop - Matting Room



2994

## Vija Celmins

American, b. 1938

*Night Sky 2 (Reversed)*, 2002

three-color photoetching, aquatint, photogravure, and drypoint on Hahnemühle

Copperplate paper

H: 20 3/4 in. x W: 24 1/2 in. (52.71 x 62.23 cm)

Carol R. Brown Acquisition Fund for Contemporary Art, 2007.40

Workshop - Matting Room



46963

## John Divola

American, b. 1949

*Zuma Series, 5*, 1982

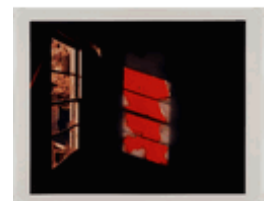
dye transfer print

H: 16 in. x W: 25 in. (40.64 x 63.50 cm) sheet size

Frame Size

Leisser Art Fund, 86.46.3

Workshop - Matting Room



1026119

**John Divola**

American, b. 1949

*Zuma Series, 14, 1982*

dye transfer print

H: 16 in. x W: 20 in. (40.60 x 50.80 cm) sheet size

H: 16 in. x W: 25 in. (40.64 x 63.50 cm) Frame Size

Leisser Art Fund, 86.46.4

Workshop - Matting Room



1026120

**John Divola**

American, b. 1949

*Occupied Landscapes (Yosemite) 2/5, from the portfolio "Four Landscapes", 1992*

gelatin silver print

H: 20 in. x W: 24 in. (50.80 x 60.96 cm)

Second Century Acquisition Fund, 93.77.2

Workshop - Matting Room



1033688

**John Divola**

American, b. 1949

*Occupied Landscapes (Yosemite) 2/5, from the portfolio "Four Landscapes", 1992*

gelatin silver print

H: 20 in. x W: 24 in. (50.80 x 60.96 cm)

Second Century Acquisition Fund, 93.77.5

Workshop - Matting Room



1033691

**John Divola**

American, b. 1949

*Isolated Houses (High Desert) 2/5, from the portfolio "Four Landscapes", 1992*

gelatin silver print

H: 20 in. x W: 24 in. (50.80 x 60.96 cm)

Second Century Acquisition Fund, 93.77.6

Workshop - Matting Room



1033692

**John Divola**

American, b. 1949

*Isolated Houses (High Desert) 2/5, from the portfolio "Four Landscapes", 1992*

gelatin silver print

H: 20 in. x W: 24 in. (50.80 x 60.96 cm)

Second Century Acquisition Fund, 93.77.9

Workshop - Matting Room



1033695

**John Divola**

American, b. 1949

*Boats at Sea (Pacific Coast) 2/15, from the portfolio "Four Landscapes", 1992*

gelatin silver print

H: 20 in. x W: 24 in. (50.80 x 60.96 cm)

Second Century Acquisition Fund, 93.77.16

Workshop - Matting Room



1033682

**John Divola**

American, b. 1949

*Boats at Sea (Pacific Coast) 2/15*, from the portfolio "Four Landscapes", 1992

gelatin silver print

H: 20 in. x W: 24 in. (50.80 x 60.96 cm)

Second Century Acquisition Fund, 93.77.17

Workshop - Matting Room



1033683

**Peter Doig**

Scottish, b. 1959

*Driftwood*, 2001-2002

oil on canvas

H: 130 in. x W: 78 3/4 in. (330.20 x 200.03 cm)

The Henry L. Hillman Fund, 2002.34

Painting Storage - Rack 006A



350

**Roe Ethridge**

American, b. 1969

*Canada (Near Banff)*, 2005

chromogenic print

H: 32 3/4 in. x W: 26 1/2 in. (83.18 x 67.31 cm)

The Henry L. Hillman Fund, 2006.34.1

Painting Storage - Rack 068B



26466

**Roe Ethridge**

American, b. 1969

*Town and Country, Liberty, New York*, 2005

chromogenic print

H: 32 3/4 in. x W: 26 1/2 in. (83.18 x 67.31 cm)

The Henry L. Hillman Fund, 2006.34.3

Painting Storage - Rack 058B



26468

**Llyn Foulkes**

American, b. 1934

*Les Beaux*, 1989

oil or acrylic on canvas

H: 108 in. x W: 134 1/2 in. (274.30 x 341.60 cm)

Gift of Darthea Speyer, 2010.48.3

Painting Storage - floor



91905

**Katy Grannan**

American, b. 1969

*Cassandra, b. 1983*, 2005

Pigment inkjet print

H: 28 1/2 in. x W: 35 5/8 in. (72.39 x 90.49 cm)

A. W. Mellon Acquisition Endowment Fund, 2006.15.1

Print Room - Bin 25A



22702

**Katy Grannan**

American, b. 1969

*Robbie*, b. 1994, 2004

Pigment inkjet print

H: 28 1/2 in. x W: 35 5/8 in. (72.39 x 90.49 cm)

A. W. Mellon Acquisition Endowment Fund, 2006.15.2

Print Room - Bin 25A



22703

**Rachel Harrison**

American, b. 1966

*Utopia*, 2002

Wood, polystyrene, cement, acrylic, porcelain figurine, and pyrite

H: 80 in. x W: 40 in. x D: 38 1/2 in. (203.20 x 101.60 x 97.79 cm)

Oxford Development Fund, 2002.37

[Gallery 16] - Scaife 16



337

**Hiroshi Sugimoto**

Japanese, b. 1948

*Arctic Ocean, Nord Kapp II* (#334), 1990

From the series *Time Exposed*

gelatin silver print in sealed plastic frame

H: 26 1/4 in. x W: 33 1/4 in. x D: 1 5/8 in. (66.67 x 84.45 x 4.13 cm) frame size

H: 20 in. x W: 24 in. (50.80 x 60.96 cm) VAX Measurements

Purchase: gift of Milton Fine, 91.28.1

Painting Storage - Rack I 10B



1029680

**Hiroshi Sugimoto**

Japanese, b. 1948

*Irish Sea, Isle of Man I* (#337), 1990

From the series *Time Exposed*

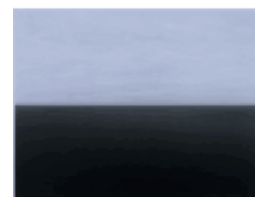
gelatin silver print in sealed plastic frame

H: 20 in. x W: 24 in. (50.80 x 60.96 cm) VAX Measurements

H: 26 1/4 in. x W: 33 1/4 in. x D: 1 5/8 in. (66.67 x 84.45 x 4.13 cm) frame size

Purchase: gift of Milton Fine, 91.28.2

Painting Storage - Rack I 10B



1029681

**Hiroshi Sugimoto**

Japanese, b. 1948

*Aegean Sea, Pilon III* (#351), 1990

From the series *Time Exposed*

gelatin silver print in sealed plastic frame

H: 26 1/4 in. x W: 33 1/4 in. x D: 1 5/8 in. (66.67 x 84.45 x 4.13 cm) frame size

H: 20 in. x W: 24 in. (50.80 x 60.96 cm) VAX Measurements

Purchase: gift of Milton Fine, 91.28.3

Painting Storage - Rack I 10B



1029682

**Carsten Höller**

Belgian, b. 1961  
*Mushroom Print*, 2004  
two-color photogravure  
H: 20 1/2 in. x W: 20 in. (52.07 x 50.80 cm)  
Oxford Development Fund, 2004.18.1  
Print Room - Bin 61B



10193

**Carsten Höller**

Belgian, b. 1961  
*Mushroom Print*, 2004  
two-color photogravure  
H: 20 1/2 in. x W: 20 in. (52.07 x 50.80 cm)  
Oxford Development Fund, 2004.18.2  
Print Room - Bin 61B



10194

**Carsten Höller**

Belgian, b. 1961  
*Mushroom Print*, 2004  
two-color photogravure  
H: 20 1/2 in. x W: 20 in. (52.07 x 50.80 cm)  
Oxford Development Fund, 2004.18.3  
Print Room - Bin 61B



10195

**Carsten Höller**

Belgian, b. 1961  
*Mushroom Print*, 2004  
two-color photogravure  
H: 20 1/2 in. x W: 20 in. (52.07 x 50.80 cm)  
Oxford Development Fund, 2004.18.4  
Print Room - Bin 61B



10196

**Carsten Höller**

Belgian, b. 1961  
*Mushroom Print*, 2004  
two-color photogravure  
H: 20 1/2 in. x W: 20 in. (52.07 x 50.80 cm)  
Oxford Development Fund, 2004.18.5  
Print Room - Bin 61B



10197

**Carsten Höller**

Belgian, b. 1961  
*Mushroom Print*, 2004  
two-color photogravure  
H: 20 1/2 in. x W: 20 in. (52.07 x 50.80 cm)  
Oxford Development Fund, 2004.18.6  
Print Room - Bin 61B



10198

**Carsten Höller**

Belgian, b. 1961  
*Mushroom Print*, 2004  
two-color photogravure  
H: 20 1/2 in. x W: 20 in. (52.07 x 50.80 cm)  
Oxford Development Fund, 2004.18.7  
Print Room - Bin 62A



10199

**Carsten Höller**

Belgian, b. 1961  
*Mushroom Print*, 2004  
two-color photogravure  
H: 20 1/2 in. x W: 20 in. (52.07 x 50.80 cm)  
Oxford Development Fund, 2004.18.8  
Print Room - Bin 62A



10200

**Carsten Höller**

Belgian, b. 1961  
*Mushroom Print*, 2004  
two-color photogravure  
H: 20 1/2 in. x W: 20 in. (52.07 x 50.80 cm)  
Oxford Development Fund, 2004.18.9  
Print Room - Bin 62A



10201

**Carsten Höller**

Belgian, b. 1961  
*Mushroom Print*, 2004  
two-color photogravure  
H: 20 1/2 in. x W: 20 in. (52.07 x 50.80 cm)  
Oxford Development Fund, 2004.18.10  
Print Room - Bin 62A



10202

**Carsten Höller**

Belgian, b. 1961  
*Mushroom Print*, 2004  
two-color photogravure  
H: 20 1/2 in. x W: 20 in. (52.07 x 50.80 cm)  
Oxford Development Fund, 2004.18.11  
Print Room - Bin 62A



10203

**Carsten Höller**

Belgian, b. 1961  
*Mushroom Print*, 2004  
two-color photogravure  
H: 20 1/2 in. x W: 20 in. (52.07 x 50.80 cm)  
Oxford Development Fund, 2004.18.12  
Print Room - Bin 62A



10204

**Richard Hughes**

British, b. 1974

*The UN-NESS of ONE-NESS*, 2007

fiberglass, clear casting resin, and blades of grass

H: 8 1/4 in. x W: 10 3/4 in. x D: 10 3/4 in. (20.95 x 27.30 x 27.30 cm)

Component Measurement

H: 7 in. x W: 8 in. x D: 8 in. (17.80 x 20.30 x 20.30 cm) Component

Measurement

The Henry L. Hillman Fund, 2008.56.A-B

[Gallery 16] - Scaife 16



68910

**Ellsworth Kelly**

American, b. 1923

*Plant*, 1957

watercolor on paper

H: 23 in. x W: 17 1/2 in. (58.42 x 44.45 cm)

Gift of friends in memory of G. David Thompson, 58.58

Workshop - Matting Room



1010895

**Florian Maier-Aichen**

German, b. 1973

*Untitled*, 2005

chromogenic print

H: 72 in. x W: 90 1/2 in. (182.90 x 229.87 cm)

Joseph Soffer Family Trust Fund, 2006.21

Painting Storage - Rack 011B



22701

**Beatriz Milhazes**

Brazilian, b. 1960

*Nazareth das Farinhas*, 2002

acrylic on canvas

H: 94 in. x W: 94 2/3 in. (238.80 x 240.45 cm)

Alexander C. and Tillie S. Speyer Fund for Contemporary Art in honor of Madeline Grynsztejn, 2002.39

Painting Storage - Rack 004B



368

**Laura Owens**

American, b. 1970

*Untitled*, 1999

acrylic and oil on canvas

H: 150 in. x W: 96 in. (381.00 x 243.84 cm)

Gift of LLWW Foundation, 1999.56

Painting Storage - Rack 006B



1003937

**Laura Owens**

American, b. 1970

*Untitled*, 2004

etching, aquatint with airbrush on paper

H: 33 1/8 in. x W: 29 1/4 in. (84.14 x 74.30 cm)

Alan D. and Marsha W. Bramowitz Contemporary Print Acquisition Fund, 2004.32

Workshop - Matting Room



12809



**Fischli & Weiss**

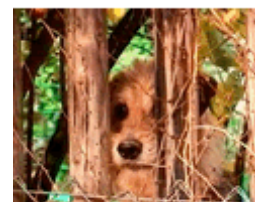
Swiss, b. active 1979

*Hund (Dog)*, 2003

Video; color, sound

Milton Fine Fund, 2006.19.1

Painting Storage - Vault 15G



22676

**Fischli & Weiss**

Swiss, b. active 1979

*Büsi (Cat)*, 2001

Video; color, sound

Milton Fine Fund, 2006.19.2

Painting Storage - Vault 15G



22675

**Edward Ruscha**

American, b. 1937

*La Brea, Sunset, Orange, De Longpre*, 1999

acrylic on canvas

H: 60 in. x W: 60 1/8 in. (152.40 x 152.72 cm)

Heinz Family Fund, 1999.47

Painting Storage - Rack 046A



1003916

**Valeska Soares**

Brazilian, b. 1957

*Horizontes*, 2009

45 wooden boxes

H: 23 1/4 in. x W: 492 in. (59.05 x 1,249.70 cm)

Mr. and Mrs. Peter Denby Fund, Second Century Acquisition Fund, and Gumberg Family Fund, 2010.4.1-.45

Painting Storage



89053

**Paul Thek**

American, 1933–1988

*Untitled (Dinosaur)*, 1971

Tempera, oil, and graphite on newspaper

H: 22 3/4 in. x W: 33 3/16 in. (57.79 x 84.30 cm)

The Henry L. Hillman Fund and Carnegie Mellon Art Gallery Fund, 2011.10

Print Room - Bin 58B



92895

**James Welling**

American, b. 1951

*Coal Cars, Panther Hollow, Pittsburgh, Pennsylvania*, 1998

Iris inkjet print

H: 27 1/8 in. x W: 34 1/4 in. (68.90 x 87.00 cm) VAX Measurements

H: 38 1/2 in. x W: 60 1/2 in. (96.52 x 152.40 cm) Frame Size

Oxford Development Fund, 1999.3.1

Painting Storage - Rack 050A



1003880



**James Welling**

American, b. 1951

*Coal*, 1998

Iris inkjet print

H: 27 1/8 in. x W: 34 3/4 in. (68.90 x 88.27 cm) VAX Measurements

H: 38 1/2 in. x W: 60 1/5 in. (96.52 x 152.40 cm) Frame Size

Gift of the artist, 1999.6.2

Painting Storage - Rack 050A



1003952